

## 41st Binghamton Geomorphology Symposium Field Trip 2010:

### *Can one foot of relief really make that much of a difference?*

Join us for a leisurely paddle and hike through Congaree National Park's old-growth bottomland floodplain forest where minimal changes in elevation have a significant effect on ecosystem processes. We will explore the complex interactions between geomorphology, hydrology, and ecology and examine some of the challenges facing floodplain ecosystems. The field trip will be lead by Kimberly M. Meitzen and John A. Kupfer.

**When? Friday October 15th, 2010 8:15 - 3:30**

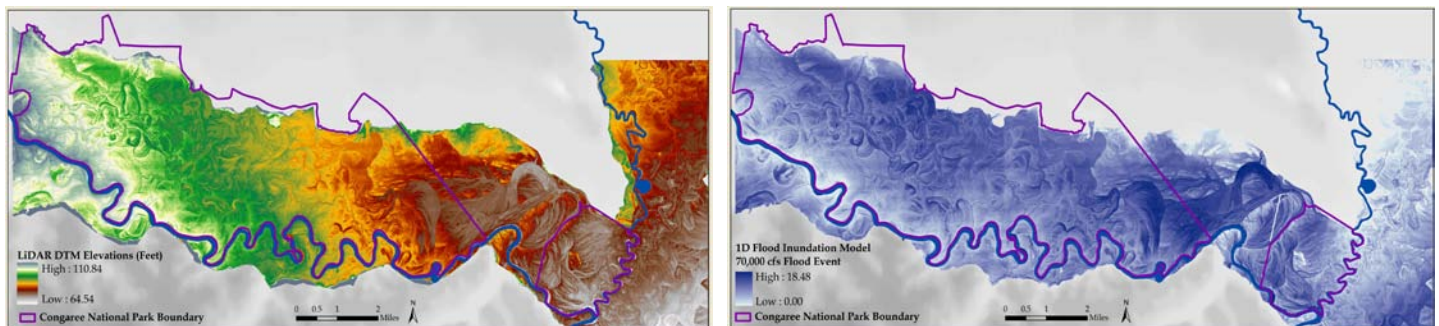
**Where? Congaree National Park, Hopkins, South Carolina**

Participants will meet at Callcott (a.k.a. Geography Department) at 8:15 am and the bus will depart promptly at 8:30. Participants will return to Callcott via the bus at 3:30 pm.

\*The field trip is limited to 40 participants. Please sign up early, this field trip will fill up fast!!!\*



The field trip will include a short canoe paddle on Cedar Creek, a yazoo tributary to the Congaree River, and a short hike along a raised boardwalk trail through the floodplain. Please be prepared to spend the day outside, a light jacket/raincoat, hat, sunscreen, and bug repellent are advised. We will provide water and box lunches (if you are a vegetarian or have any food allergies please contact us and we can plan accordingly).



Left: LiDAR derived Digital Terrain Model (DTM) of Congaree River floodplain. Right: HEC-RAS derived flood inundation model of Congaree River floodplain.

**If you have any questions about the field trip please send an email:**

**Contact:** Kimberly Meitzen **E-mail:** [Meitzenk@email.sc.edu](mailto:Meitzenk@email.sc.edu)

**Visit Congaree National Park:** <http://www.nps.gov/cong/index.htm>

Please check back for updates to this page!



UNIVERSITY OF  
SOUTH CAROLINA